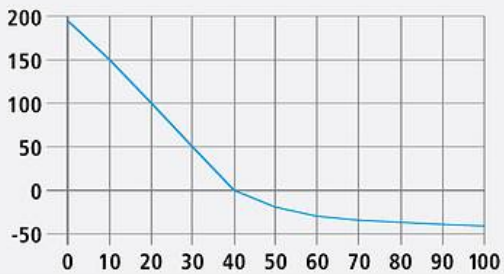
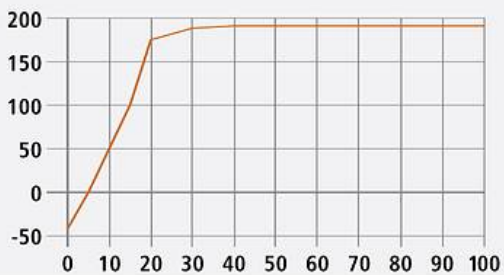


Cooling down speed TTC / CTC 256



180 to -40 °C in 80 minutes*

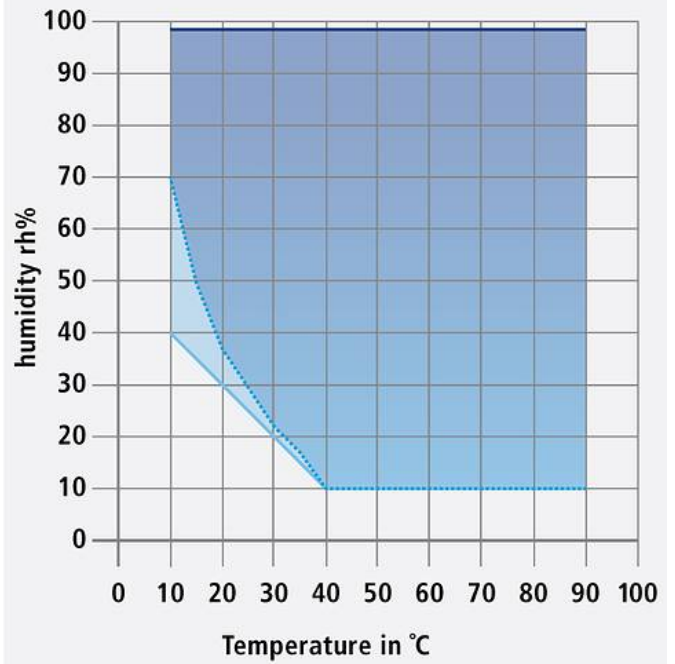
Heating up speed TTC / CTC 256



-40 to 180 °C in 20 minutes*

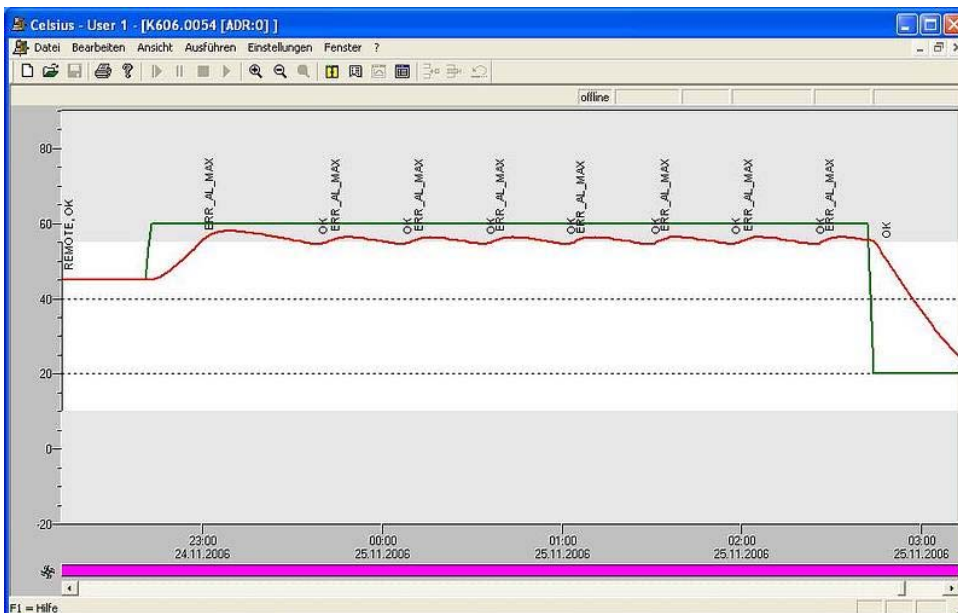
* to 98% of setpoint

Adjustment range of temperature and relative humidity rh%



Log memory

Celsius 2007 Screenshot: Reading out the flash log from a file...



Celsius Software

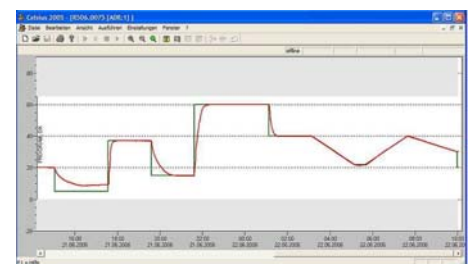
A screenshot of the Celsius software interface showing a table of program settings. The table has columns for 'Time-Minuten', 'Period-Intervall', 'Temp. °C', 'Type', 'Flag', 'Fan', 'a', and 'b'. The table contains 8 rows of data.

Time-Minuten	Period-Intervall	Temp. °C	Type	Flag	Fan	a	b
1	1:00	1:00	100	NEXT	CLOSE	MAX	
2	2:00	1:00	100	NEXT	40%	50%	
3	2:01	0:01	200	SPWT	CLOSE	MAX	
4	3:01	1:00	300	NEXT	CLOSE	OFF	
5	5:16	2:15	150	OPEN	90%		
6	5:45	0:30	150	NEXT	50%	OFF	
7	6:45	1:00	100	END	OPEN	20%	
8						30%	

Celsius Screenshot: tabular programming

A screenshot of the Celsius software interface showing a dialog box titled 'Specify GLP Data for device 0'. The dialog box has fields for 'Experiment' (Celsius - test), 'Probe-ID' (HCP2342), 'Company' (Menmert GmbH + Co.KG), and 'Tested by' (User 1). There are 'OK' and 'Cancel' buttons.

Celsius Screenshot: Determining GLP data



Celsius Screenshot: Temperature log